

Patuxent River Navy Flying Club



CLEARED AS FILED?

PRNFC

PO BOX 332

PATUXENT RIVER MD 20670

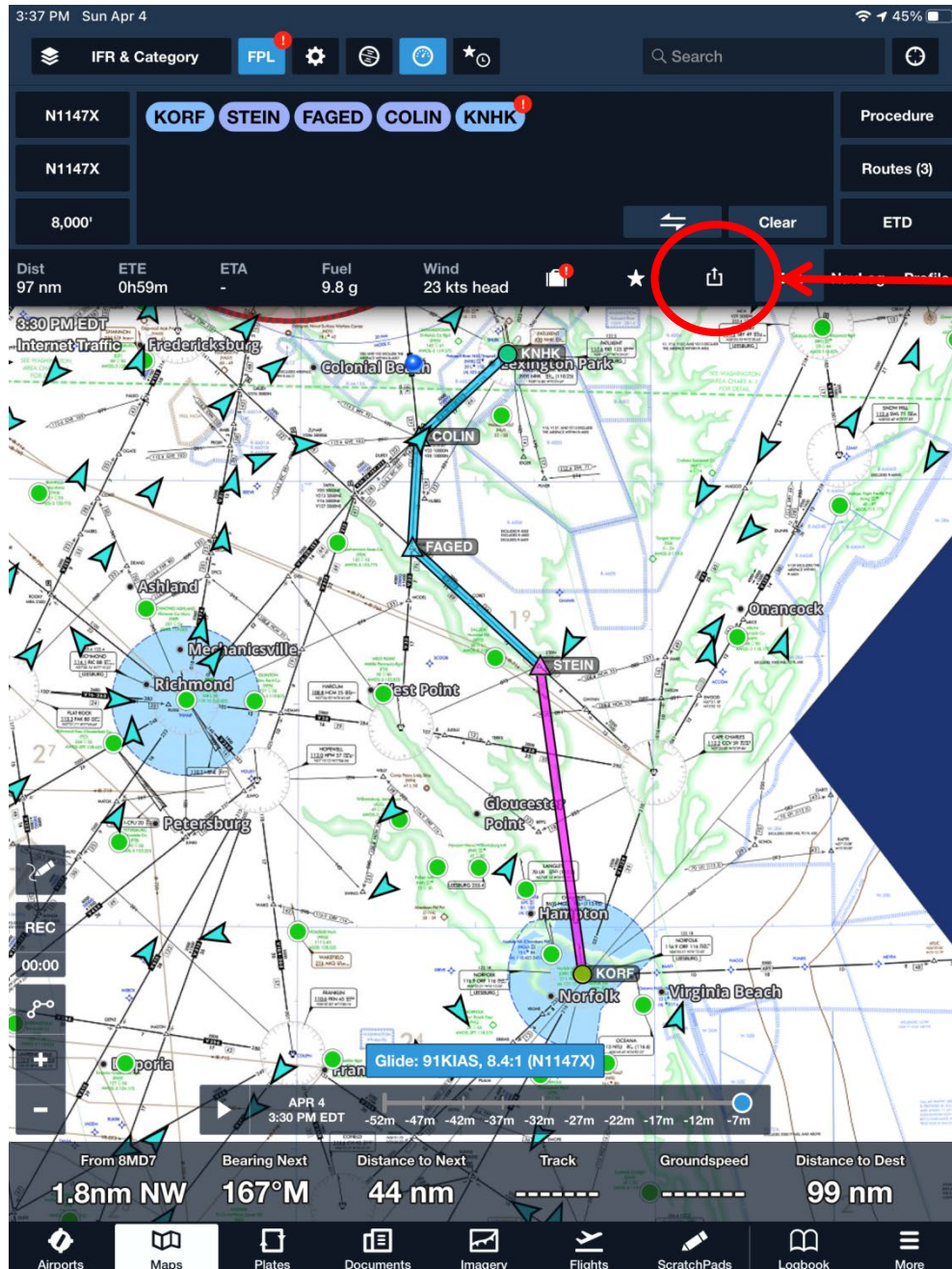
(301) 342-1110

INTRODUCTION

Creating, Filing, Amending, Receiving, and Flying a Clearance

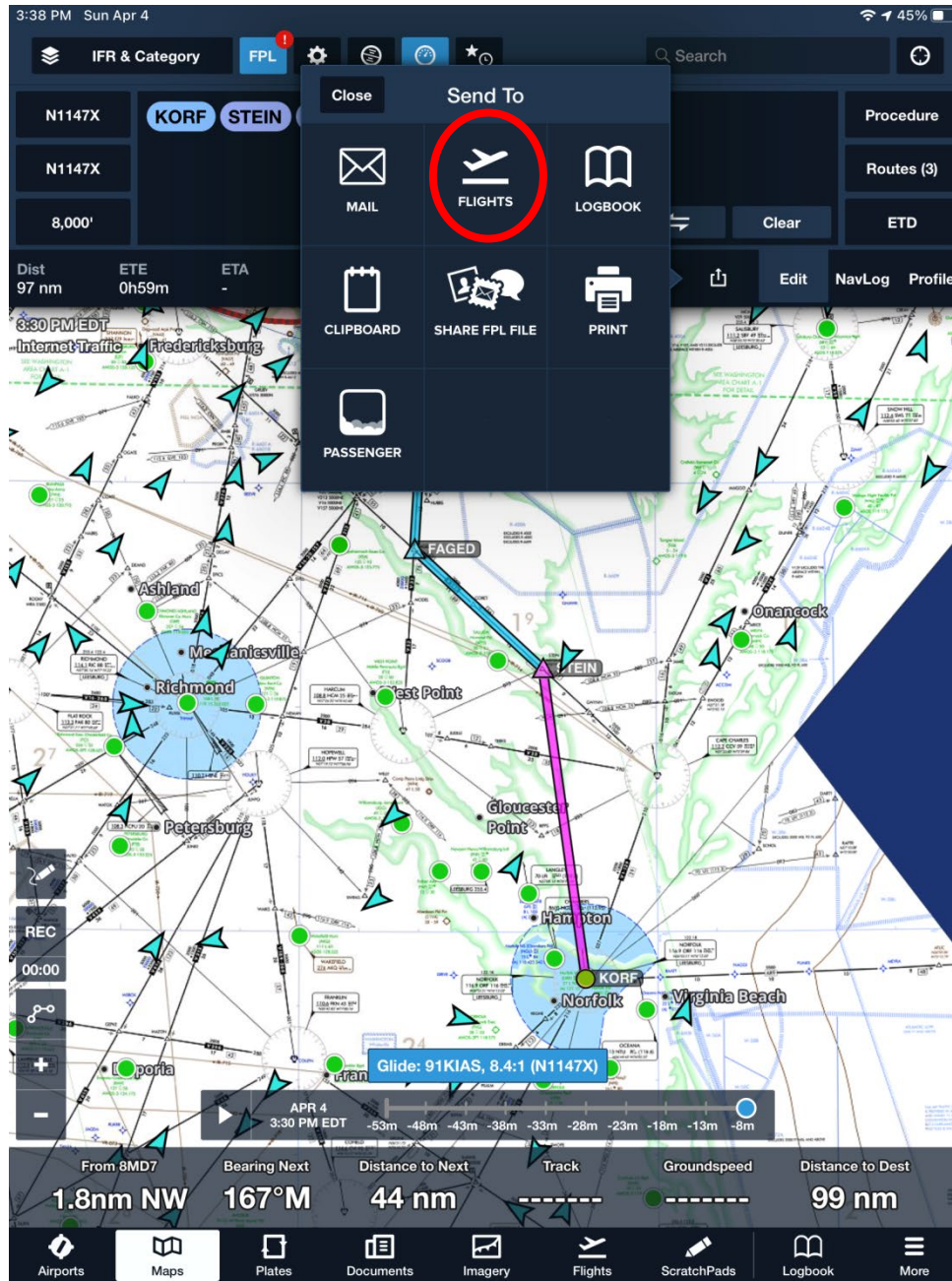
- ForeFlight & Garmin GNS-430/530
 - Used as examples in this briefing
 - The concepts apply to other software and instruments.
- The Maps Display is a good place to start for flight Planning.
 - The Low Altitude Chart shows airports, nav aids, fixes, routes, and RNAV Waypoints to use as waypoints for course planning.
 - The Sectional and Terminal Area Charts show Special Use Airspace, emergency/divert airfields, and Class B, C, D Airspace
 - When connected to the Internet, TFRs and weather can be displayed.

CREATING THE FLIGHT PLAN



"Send To" icon

SEND THE FLIGHT PLAN TO FLIGHTS



THE FLIGHT PLAN IN FLIGHTS

3:38 PM Sun Apr 4

KORF to KNHK
Sun Apr 4, 3:50pm EDT

Edit Flights +

Distance 97 nm ETE 0h59m ETA (EDT) 4:48 pm Flight Fuel 9.9 g Wind 22 kts head

Filter

APRIL 2021

KORF to KNHK (IFR) Sun 4/4/21
8,000' MSL in N1147X
ETA 4:48 PM EDT ETE 0h59m
STEIN FAGED COLIN

MARCH 2021

KORF to KNHK (IFR) Sat 3/27/21
10,000' MSL in N1147X
ETA 9:13 PM EDT ETE 0h53m
HCM V33 COLIN V16 PXT
Filed

KORF to KNHK (IFR) Sat 3/27/21
10,000' MSL in N1147X
ETA 9:02 PM EDT ETE 0h43m
DIRECT

KNHK to KORF (IFR) Sat 3/27/21
9,000' MSL in N1147X
ETA 1:06 PM EDT ETE 0h51m
PXT V16 COLIN V33 FAGED V286 STEIN
Filed

FEBRUARY 2021

KNHK to KNHK (IFR) Wed 2/17/21
5,000' MSL in N1147X
ETA 5:53 PM EST ETE 0h54m
RIKME KESN LEKVE 2W6 WETUT
Filed

KNHK to KNHK (IFR) Thu 2/4/21
3,000' MSL in N1147X
ETA 6:54 PM EST ETE 0h39m
RIKME KESN STEVR
Filed

SEPTEMBER 2020

KNHK to KMFD (IFR) Fri 9/18/20
10,000' MSL in N1147X
ETA 12:23 PM EDT ETE 2h53m
IRONES BLUES ESL MGW CTW
Filed

ROUTE

Flight Rules IFR

3:30 PM EDT

Route

STEIN FAGED COLIN

Routes (1)

Cruise Altitude 8,000 >

DESTINATION SERVICES

FBO No FBOs Available

FLIGHT LOG

Fuel at Shutdown (g) 0

Times Optional >

Pack

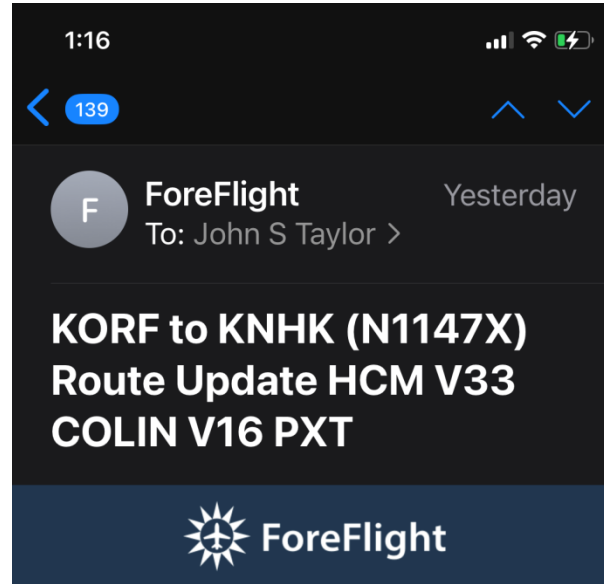
Not Filed

Proceed to File >

Airports Maps Plates Documents Imagery Flights ScratchPads Logbook More

ROUTE UPDATE FROM THE FAA

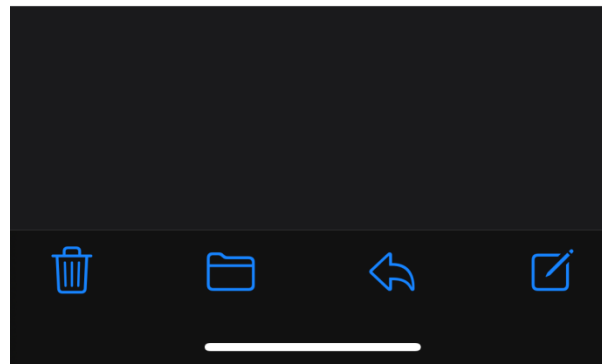
Updated route received on iPhone via e-mail.



Expected Route Received

Expected route for ~~N1147X~~ from **KORF** to **KNHK**:
HCM V33 COLIN V16 PXT

[VIEW IN FOREFLIGHT](#)



TERMINOLOGY AND EXPECTATIONS

CLEARED AS FILED– Means the aircraft is cleared to proceed in accordance with the route of flight filed in the flight plan. This clearance does not include the altitude, DP, or DP Transition.

(DP = departure procedure)

According to KNHK Base Ops (2 Apr 21), the “as filed” clearance will be the most updated in the National Airspace System, most likely NOT what you originally entered in ForeFlight (or 1800wxbrief, etc.).


- If you have doubts about your clearance, ask!

You’re better off thinking of the term “as filed” as meaning “is filed,” or whatever you last received in your ForeFlight email (or whichever app).

THE UPDATED FLIGHT

1:52 PM Sat Apr 3

KORF to KNHK
Sat Mar 27, 8:20pm EDT



Filter

MARCH 2021

KORF to KNHK (IFR)
10,000' MSL in N1147X
ETA 9:13 PM EDT ETE 0h53m
HCM V33 COLIN V16 PXT
Filed

Sat 3/27/21
ETD 8:20 PM

KORF to KNHK (IFR)
10,000' MSL in N1147X
ETA 9:02 PM EDT ETE 0h43m
DIRECT

Sat 3/27/21
ETD 8:20 PM

KNHK to KORF (IFR)
9,000' MSL in N1147X
ETA 1:06 PM EDT ETE 0h51m
PXT V16 COLIN V33 FAGED V286 STEIN
Filed

Sat 3/27/21
ETD 12:15 PM

FEBRUARY 2021

KNHK to KNHK (IFR)
5,000' MSL in N1147X
ETA 5:53 PM EST ETE 0h54m
RIKME KESN LEKVE 2W6 WETUT
Filed

Wed 2/17/21
ETD 5:00 PM

KNHK to KNHK (IFR)
3,000' MSL in N1147X
ETA 6:54 PM EST ETE 0h39m
RIKME KESN STEVR
Filed

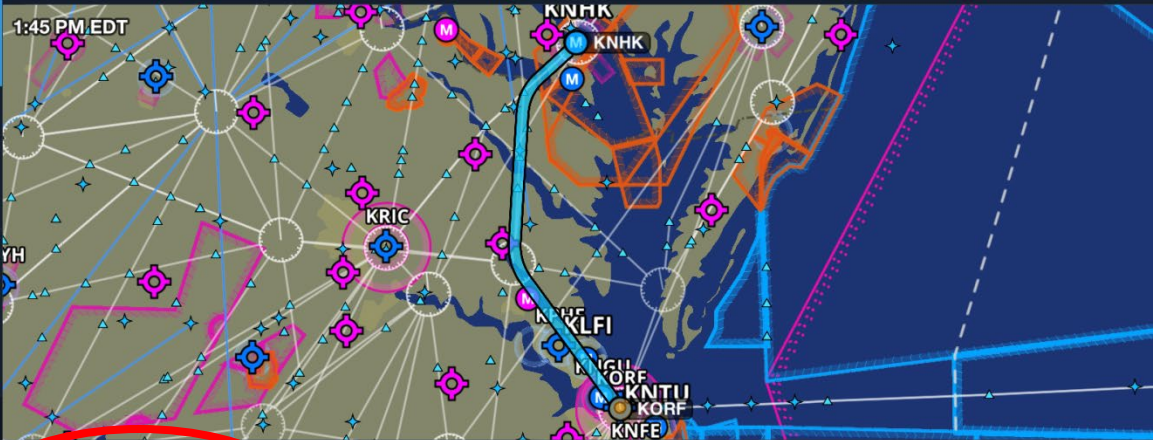
Thu 2/4/21
ETD 6:15 PM

SEPTEMBER 2020

ROUTE

Flight Rules

IFR



Route (Expected)
HCM V33 COLIN V16 PXT

Filed
STEIN FAGED COLIN

USE

Routes (0)

Cruise Altitude
Filed
ETD Mar 27 8:20 PM EDT

Airports

Maps

Plates

Documents

Imagery

Flights

ScratchPads

Checklist

Logbook

More

8

SENDING THE UPDATED FLIGHT TO MAP

1:52 PM Sat Apr 3

KORF to KNHK
Sat Mar 27, 8:20pm EDT

57%

Edit

Flights

+

Filter

MARCH 2021

KORF to KNHK (IFR)
10,000' MSL in N1147X
ETA 9:13 PM EDT ETE 0h53m
HCM V33 COLIN V16 PXT
Filed

Sat 3/27/21
ETD 8:20 PM

KORF to KNHK (IFR)
10,000' MSL in N1147X
ETA 9:02 PM EDT ETE 0h43m
DIRECT

Sat 3/27/21
ETD 8:20 PM

KNHK to KORF (IFR)
9,000' MSL in N1147X
ETA 1:06 PM EDT ETE 0h51m
PXT V16 COLIN V33 FAGED V286 STEIN
Filed

Sat 3/27/21
ETD 12:15 PM

FEBRUARY 2021

KNHK to KNHK (IFR)
5,000' MSL in N1147X
ETA 5:53 PM EST ETE 0h54m
RIKME KESN LEKVE 2W6 WETUT
Filed

Wed 2/17/21
ETD 5:00 PM

KNHK to KNHK (IFR)
3,000' MSL in N1147X
ETA 6:54 PM EST ETE 0h39m
RIKME KESN STEVR
Filed

Thu 2/4/21
ETD 6:15 PM

SEPTEMBER 2020

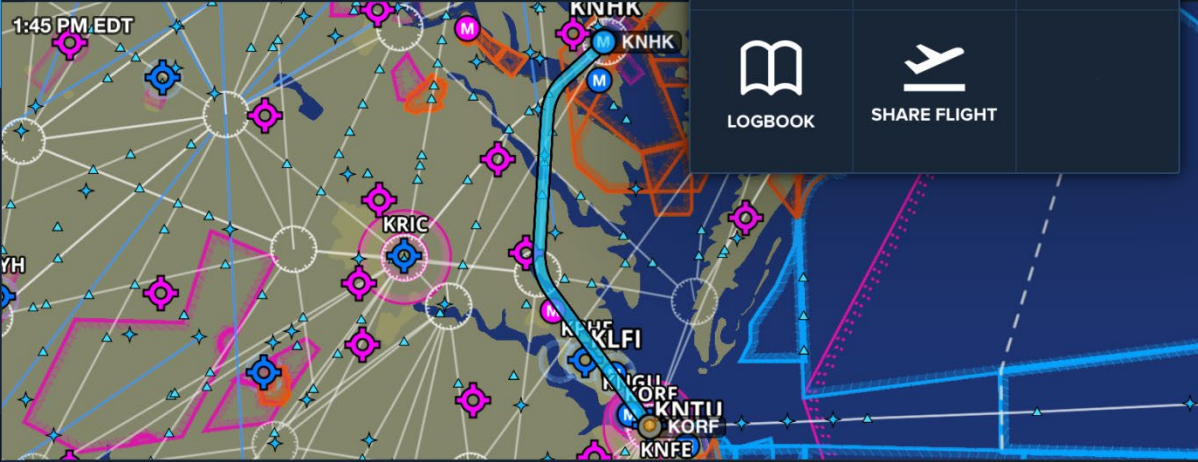
Distance
98 nm

ETE
0h53m

ETA (EDT)
9:13 pm

ROUTE

Flight Rules



Route (Expected)
HCM V33 COLIN V16 PXT

Filed
STEIN FAGED COLIN

Routes (0)

Cruise Altitude
Filed
ETD Mar 27 8:20 PM EDT

Send To

MAP

PLATES

SHARE PDF

LOGBOOK

SHARE FLIGHT

Airports

Maps

Plates

Documents

Imagery

Flights

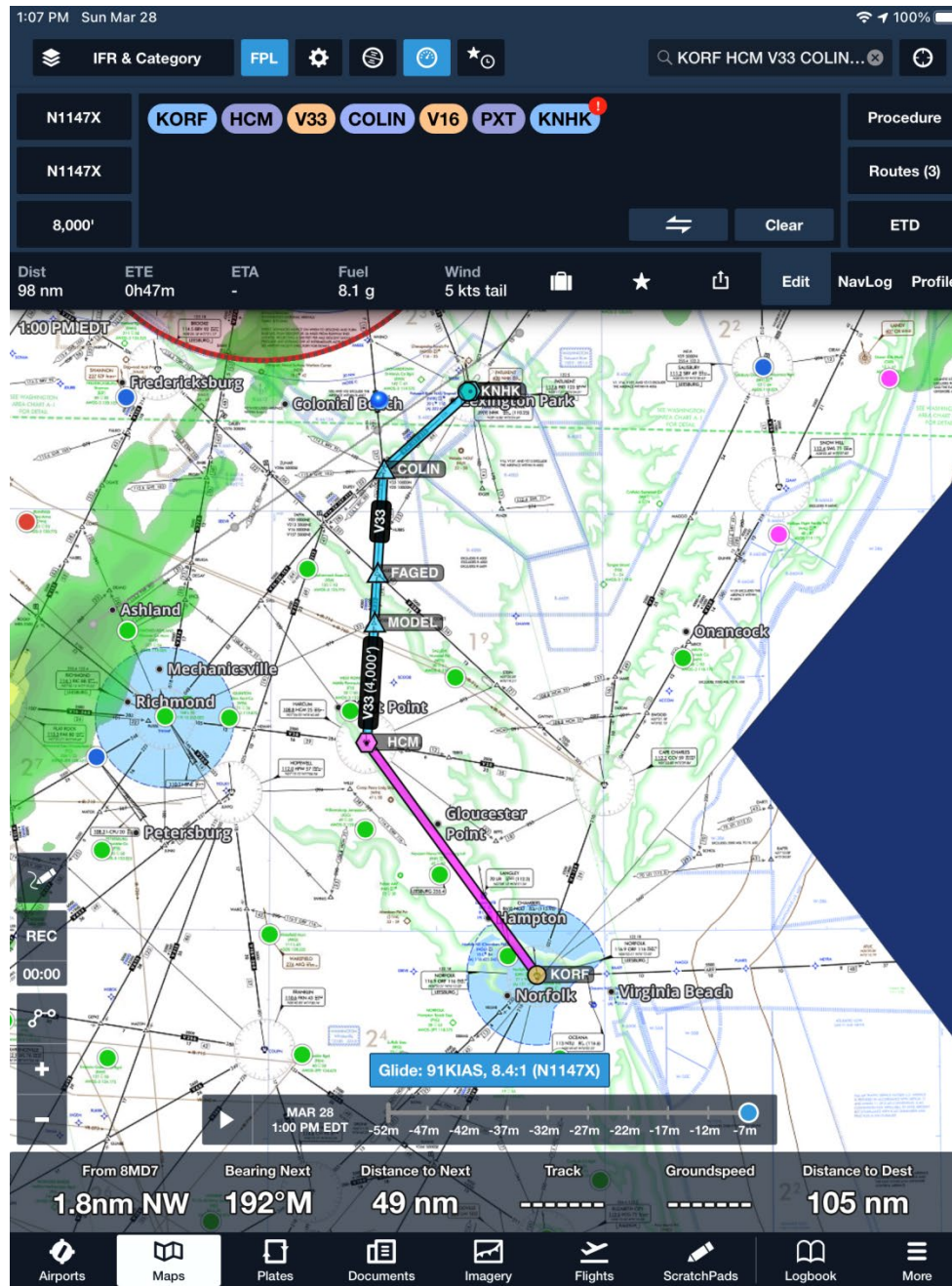
ScratchPads

Checklist

Logbook

More

THE UPDATED FLIGHT IN MAPS



UPDATED FLIGHT IN THE GNS-530W

Because MODEL, FAGED, and COLIN are on V33, as defined by the HCM 010 radial, only COLIN needs to be entered in the GNS-530.



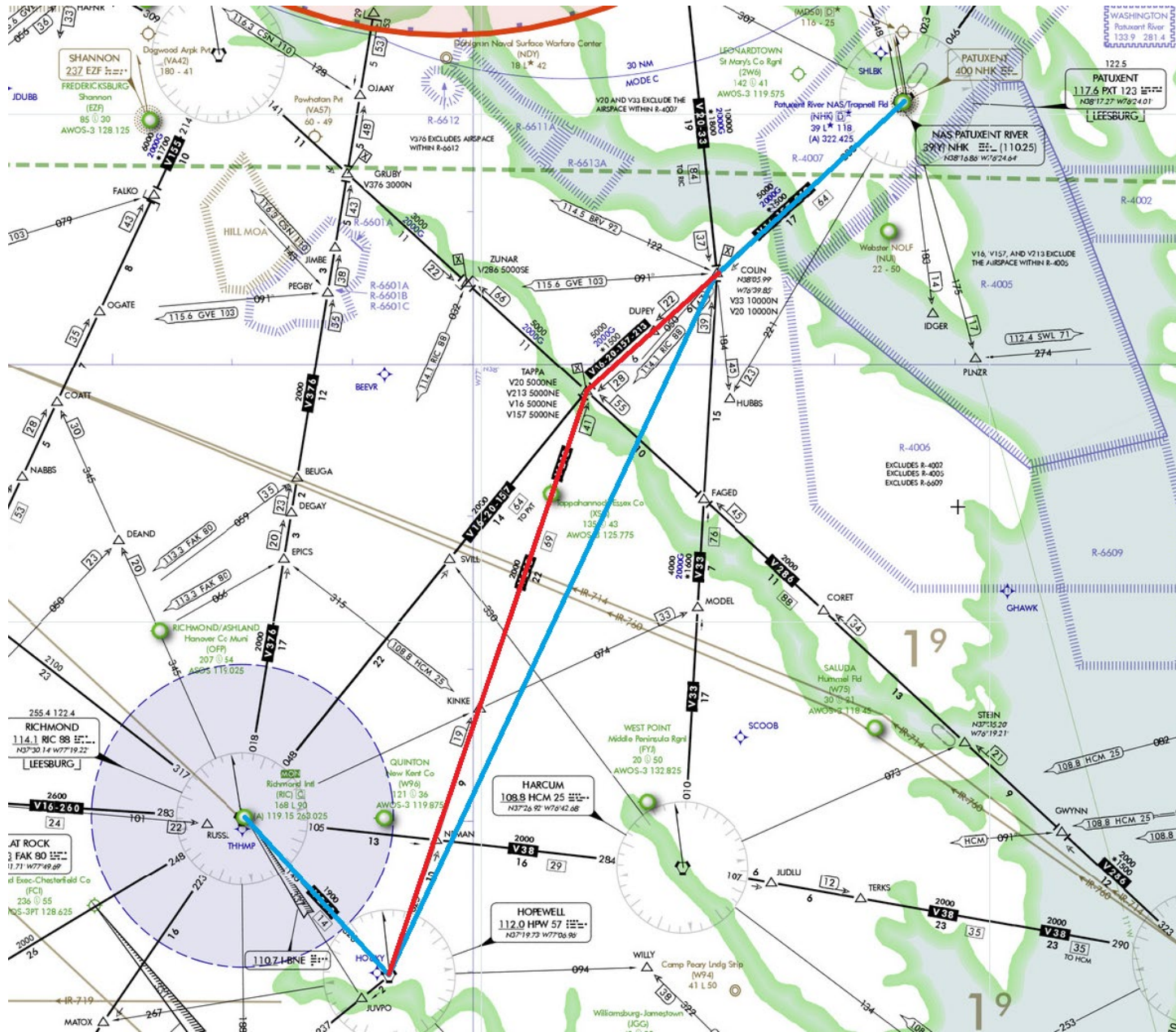
WHAT IF...

You file: KNHK – COLIN – HPW – KRIC

You receive: KNHK – COLIN – V213 – HPW – KRIC

Look at the difference on the next slide:

WHAT IF...



UPDATED FLIGHT IN THE GNS-530W

You must now include TAPPA to stay on V213. You could delete COLIN, but I would keep it because your first clearance from departure will probably be “Cleared direct COLIN.”



SUMMARY

“Cleared as filed” could be confusing.

Ensure you know your cleared routing.

Even if your clearance contains lots of victor routes, you will likely get a lot of direct clearances once airborne.

If you must fly a victor route, enter all necessary waypoints into the nav instrument (e.g., GNS-530).